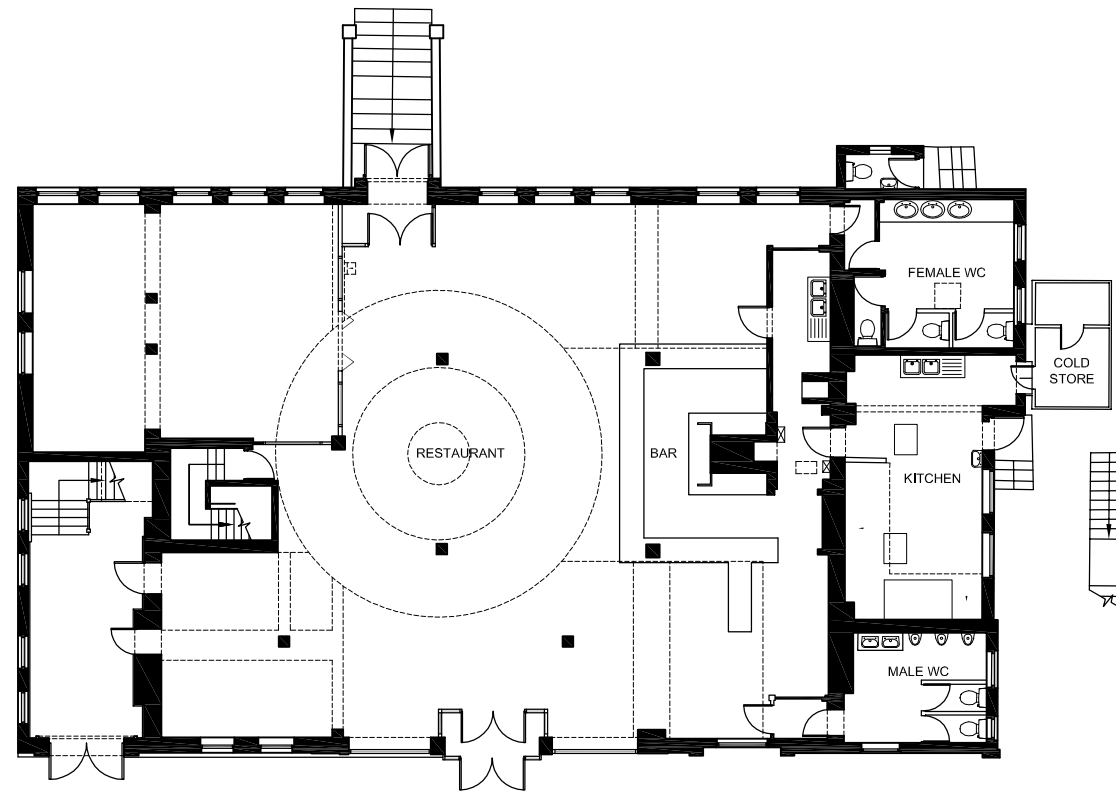
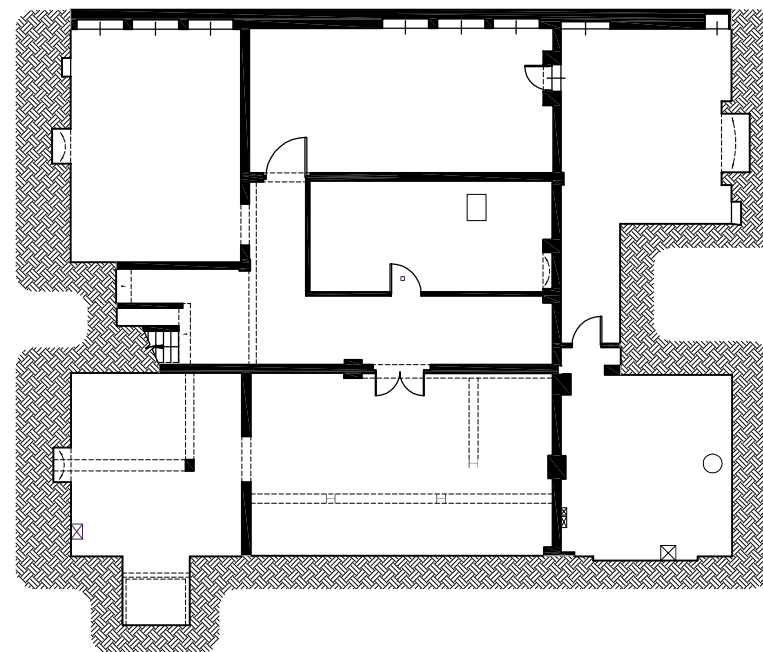


EXISTING BUILDING AREAS

	GROSS INTERNAL FLOOR AREAS			
	m ²	- m ²	ft ²	- ft ²
BASEMENT G.I.A.	224.5	- m ²	2416.5	- ft ²
GROUND FLOOR G.I.A.	364.5	- m ²	3923.4	- ft ²
FIRST FLOOR G.I.A.	308.2	- m ²	3317.4	- ft ²
SECOND FLOOR G.I.A.	24.8	- m ²	266.9	- ft ²
TOTAL G.I.A.	922.0	- m²	9924.0	- ft²



EXISTING GROUND FLOOR PLAN



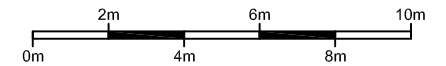
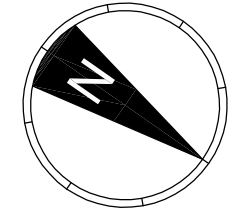
EXISTING BASEMENT FLOOR PLAN

EXISTING BASEMENT & GROUND FLOOR PLANS

ATTENTION IS DRAWN TO THE FOLLOWING REMAINING SIGNIFICANT HAZARDS

NOTES

1. ALL DIMENSIONS TO BE VERIFIED ON SITE
2. COPYRIGHT OF THIS DRAWING IS RESERVED BY RDT DESIGN
3. THIS DRAWING IS FOR PLANNING PURPOSES ONLY



PL1	PLANNING ISSUE	EJP	06.02.15
REV	DESCRIPTION	BY	DATE
STATUS			

PLANNING

CLIENT

PHARMCHEM INVESTMENTS LTD

PROJECT

RAW SPICE RESTAURANT
117-125 WEST HENDON BROADWAY
LONDON NW9 7BP

DRWG TITLE

EXISTING BASEMENT &
GROUND FLOOR PLANS

DRAWN BY	DATE	SCALE	CHECKED BY
EJP	JAN 15	1:200@A3	CC

DRWG No.	REVISION
1031-PL-030	PL1



design

5 Kinsbourne Court, Luton Road
Harpenden Hertfordshire AL5 3BL
T: +44(0)1582 461060
F: +44(0)1582 461061
E: rdt@rdtdesign.co.uk
www.rdt-design.co.uk

architects • engineers • interior designers